

**A joint collaboration between Stark County Public Health Agencies:**

Alliance City Health Department  
 Massillon City Health Department

Canton City Public Health  
 Stark County Health Department

**Stark County, Ohio**  
**April 1, 2021 Epi Report**

**COVID-19 Snapshot**  
**Stark County, Ohio**  
**as of 6:30pm**  
**April 1, 2021**

Level 1	Level 2	Level 3	Level 4
<p>Stark County is currently at a <b>Level 3 (Red)</b> Status as indicated by the Ohio Public Health Advisory System-<b>Indicators 1 &amp; 3 were met.</b></p> <p>For information on the Ohio Public Health Advisory System, please visit: <a href="https://coronavirus.ohio.gov/wps/portal/gov/covid-19/public-health-advisory-system/">https://coronavirus.ohio.gov/wps/portal/gov/covid-19/public-health-advisory-system/</a></p>			

**Confirmed Cases**

- Total: 26,239
- Active/Open Cases: 14,331
- Closed: (includes Deaths) 11,908
- Closed due to Death: 794

**Probable Cases**

- Total: 4,387
- Active/Open Cases: 2,531
- Closed: (includes Deaths) 1,966
- Closed due to Death: 146

**Hospitalized Confirmed & Probable Cases**

- Yes: (includes ICU) 1,730
- Yes, ICU: 150
- Discharged: 919

**Age Range**

- Confirmed Cases: <1-108
- Hospitalized in Confirmed Cases: <1-105
- Deaths in Confirmed Cases: 21-108

All data contained is preliminary and is subject to change as more information is reported to Ohio Department of Health (ODH). Data presented in this document is based on data as of 4.1.2021 6:30 pm (for Stark County data) and/or 2:00pm (for Ohio data). Cases from previous days are likely to change as more information is entered. Caution should be exercised as data is subject to change. Numbers may differ from ODH depending on time data was accessed.

For questions regarding this report, please contact:

Amanda Archer, MPH [aarcher@cantonhealth.org](mailto:aarcher@cantonhealth.org)

Jessica Boley, RD, LD [jboley@cantonhealth.org](mailto:jboley@cantonhealth.org)

Chelsea Sadinski, MPH [SadinskiC@starkhealth.org](mailto:SadinskiC@starkhealth.org)



**Stark County Epi Situational Report - COVID-19**

**Table 1 as of: 4/1/2021 6:30PM**

Next report scheduled: 4/8/2021

Cases Reported to Stark LHDs		
Data as of 4.1.2021 18:30		
Positive/Confirmed	26,239	
Hospitalized	1,693	6.45%
ICU Admissions	146	0.56%
Deaths in Confirmed Cases	794	3.03%
Probable Cases	4,497	
Deaths in Probable Cases	146	

Cases Reported to ODH		
Data as of 4.1.2021 14:00		
Positive/Confirmed	863,980	
Hospitalized*	53,169	6.15%
ICU Admissions*	75	0.01%
Probable Cases	156,061	
COVID related deaths of Ohio Residents		
18,609		
*Hospitalized & ICU includes confirmed & probable		

**Descriptive Statistics for Stark County Confirmed Cases**

Gender			
	Confirmed Cases		Deaths
Male	11,500	43.8%	415
Female	14,424	55.0%	379
Unknown	315	1.2%	0
Total	26,239		794

Ethnicity			
	Hispanic	Non-Hisp	Unknown*
Count	346	13,825	12,068
%	1.3%	52.7%	46.0%

Race						
	White	Black	Asian/Pacific Islander	American Indian/Alaskan	Other	Unknown*
Count	14,625	1,715	101	45	656	9,097
%	55.7%	6.5%	0.4%	0.2%	2.5%	34.7%
*Unknown counts includes refused to answer responses						

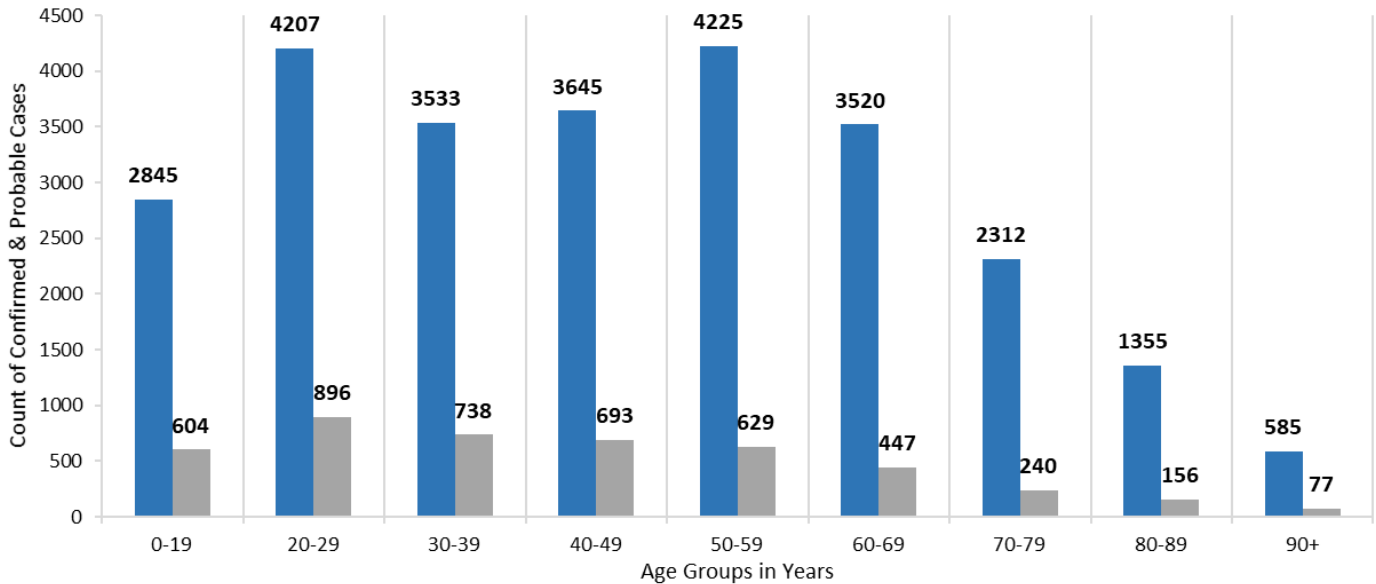
**Hospitalization Information for Stark County Confirmed Cases-Cumulative Counts**

Hospitalized			If hospitalized, in ICU?			Discharged from Hospital	
Yes	1,693	6.5%	Yes	146	9%	ICU	111
No	24,178	92.1%	No	1,547	91%	Other	784
Unknown	368	1.4%				Some cases may be discharged due to death.	

**Stark County Vaccination Update as of 4/1/2021**

Current Vaccination Groups Eligible	Vaccine Started	Vaccine Completed
Phases 1A, 1B, 1C, 1D, 1E, 2A, 2B, 2C, 2D	Count: 99,475	Count: 58,491
	26.84% of population	15.78% of population

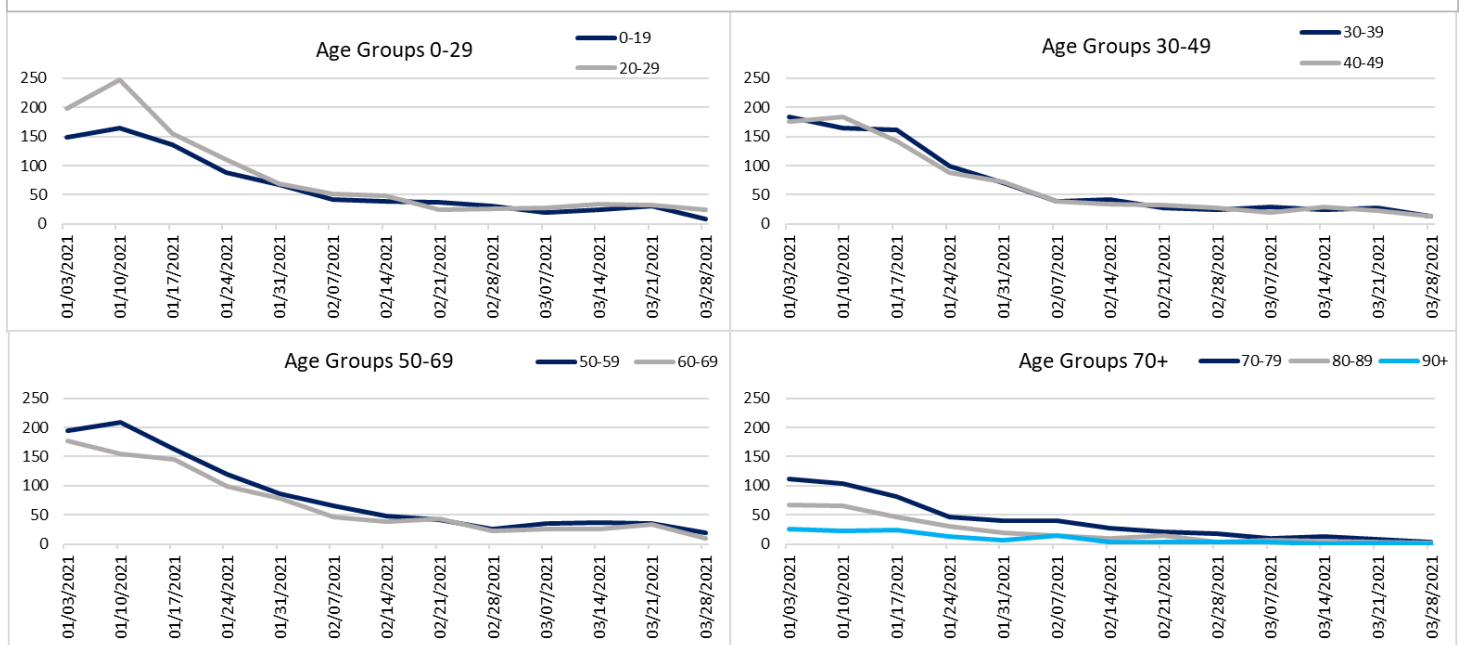
Count of Confirmed & Probable Cases by Age Group in Stark County  
Graph 1



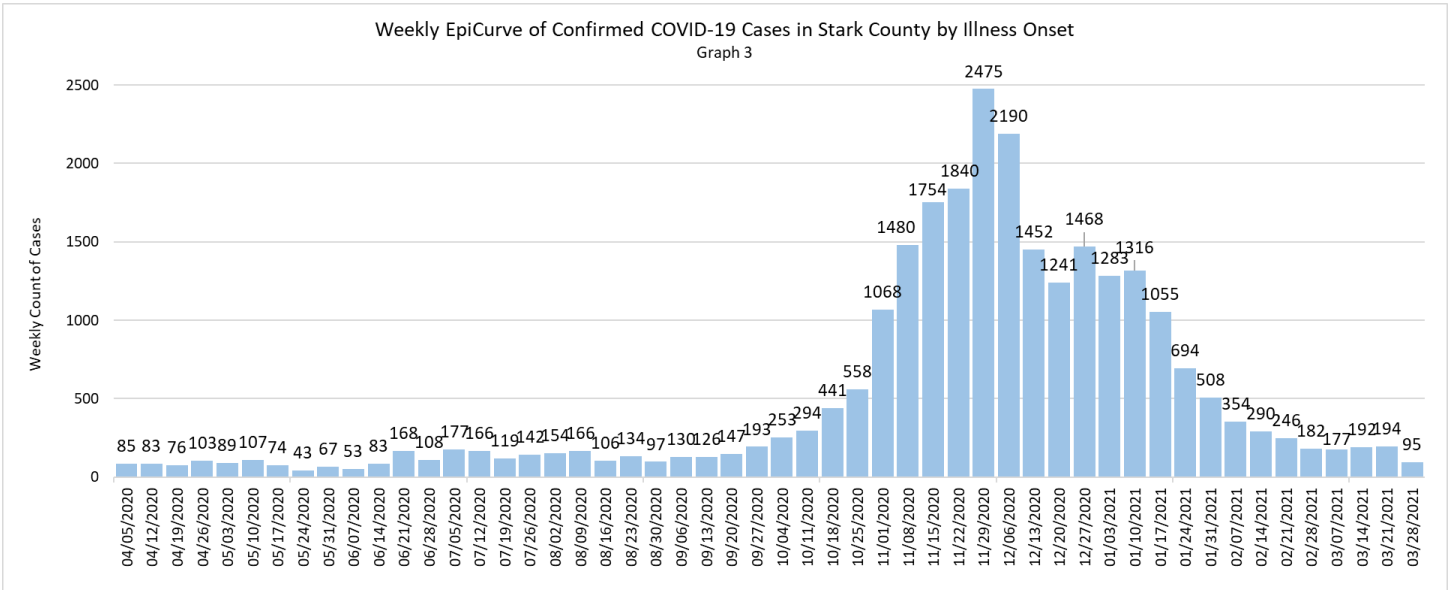
Graph 1 shows the cumulative number of laboratory-confirmed and probable cases by age group. There are 17 probable cases and 12 confirmed cases in which date of birth is currently unknown and not shown in graph above.

Graph 2 shows a breakdown of confirmed cases by week by age groups. There are 12 confirmed cases in which date of birth is currently unknown and not shown in graph below. As with all data contained in this report, caution is advised when looking at the past 2-3 weeks of data due to delays in testing results. Graphs only show data from 2021.

Weekly Counts of Confirmed Cases by Illness Onset Date and Age Group  
Graph 2

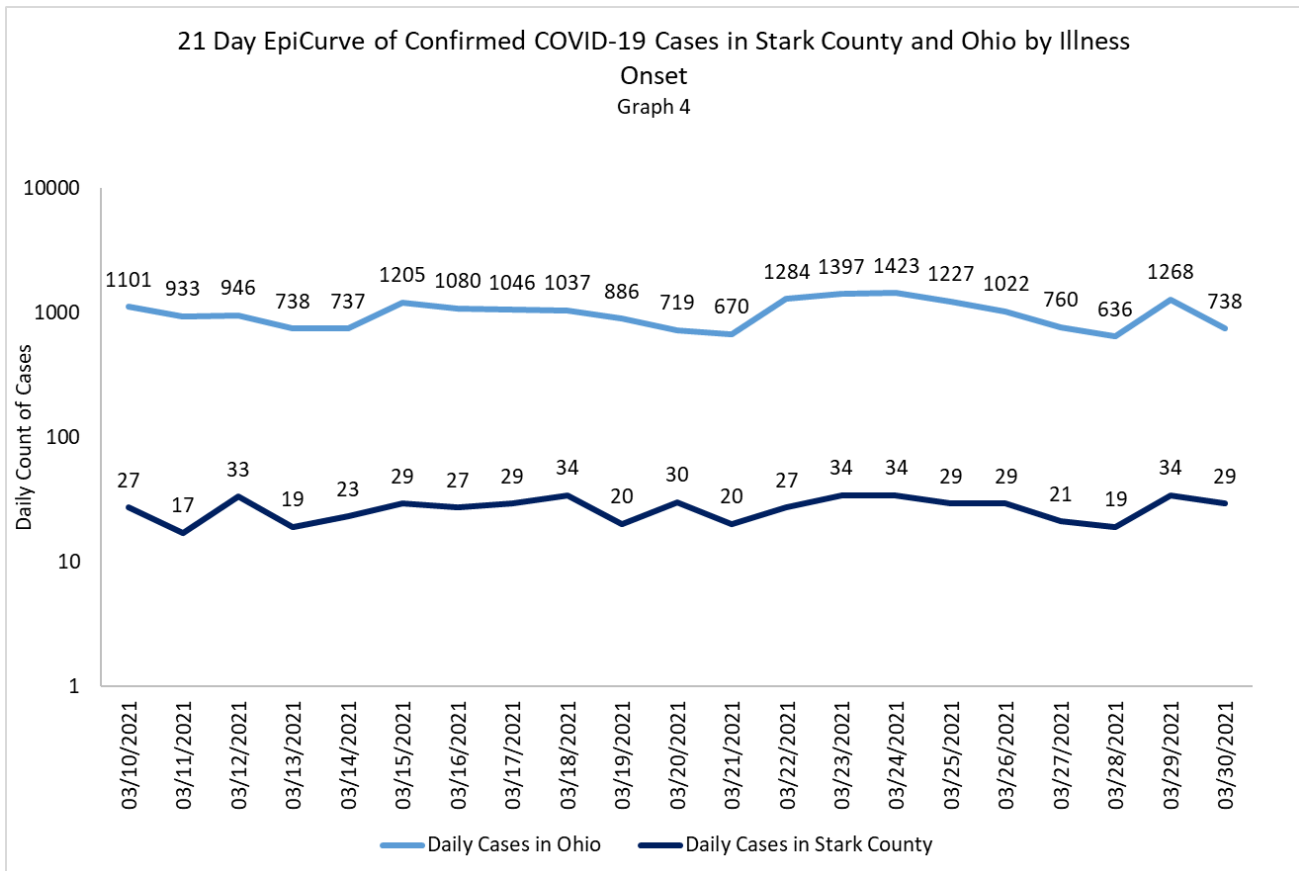


# EPIDEMIOLOGICAL REPORT ON COVID-19

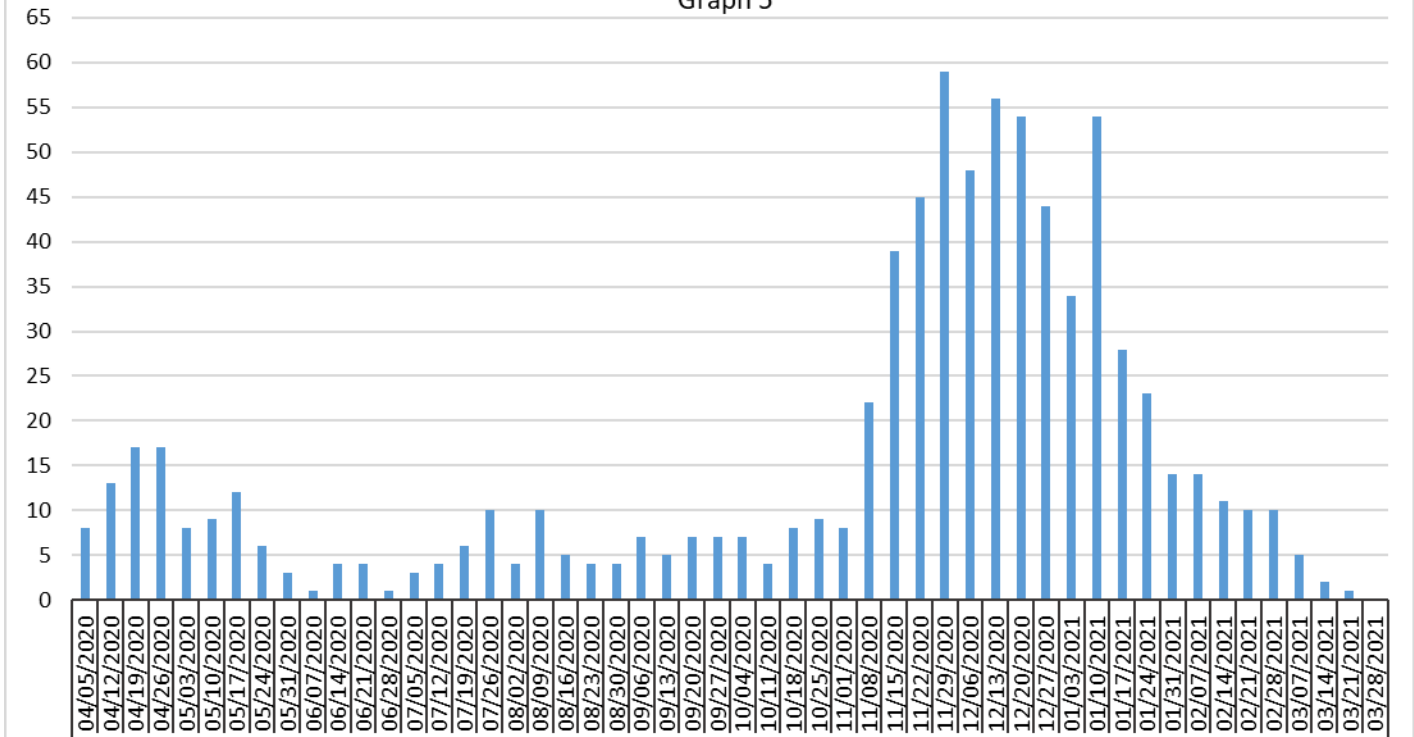


Graph 3 shows the EpiCurve which displays the total number of laboratory-confirmed cases per week, based on the illness onset date for Stark County. If the illness onset date is not available, the earliest known date is utilized, which could be the date the specimen was collected, the date of the test results or the date reported to the local health department. Counts will change as additional information is collected. Stark County’s first confirmed case reported an illness onset date of 2/25/2020 but graph only contains 52 weeks of data. **This data only includes data up until 6:30 pm on 3/26/2021.**

To help highlight short-term daily changes, Graph 4 shows daily counts of laboratory confirmed cases for a 21-day period.



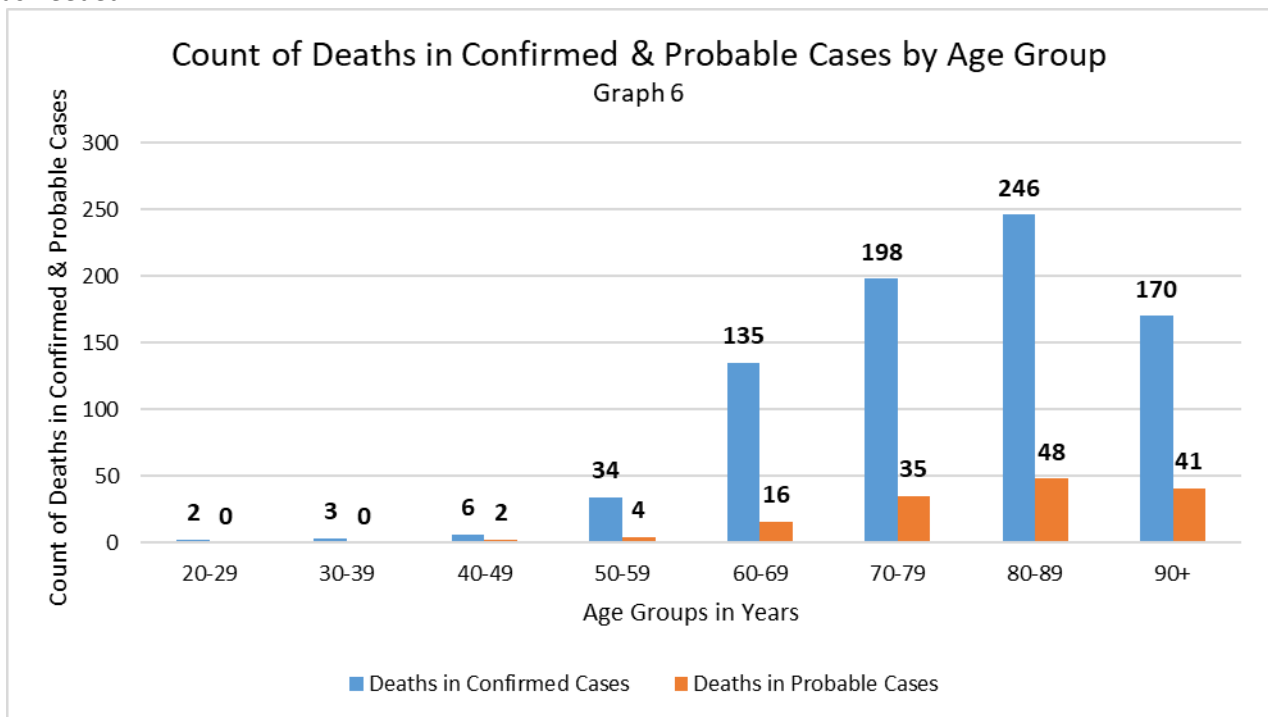
Count of Deaths in Confirmed Cases by Week  
Graph 5



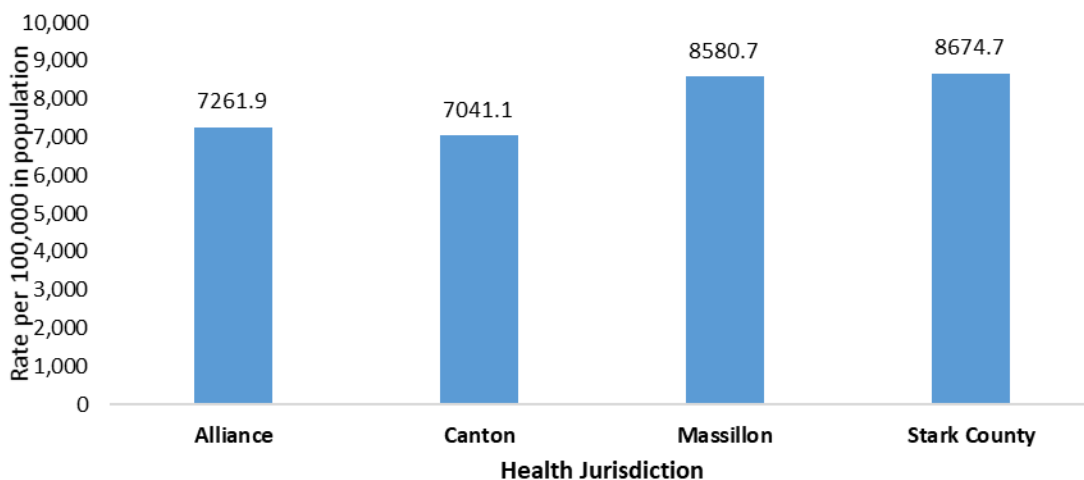
Graph 5 is a breakdown of death counts in laboratory-confirmed cases by week in which the death occurred. Includes only deaths reported to the local health department as of 6:30 pm on 4/1/2021. This isn't an automated process which is why it may be a week or longer for a death to be documented. **Please see last page of report for additional information regarding deaths.**

Graph 6 shows the breakdown in deaths in confirmed and probable cases by age group. Additional age groups will be added as needed.

Count of Deaths in Confirmed & Probable Cases by Age Group  
Graph 6



Rate of Confirmed and Probable Cases by Health Jurisdiction  
Graph 7

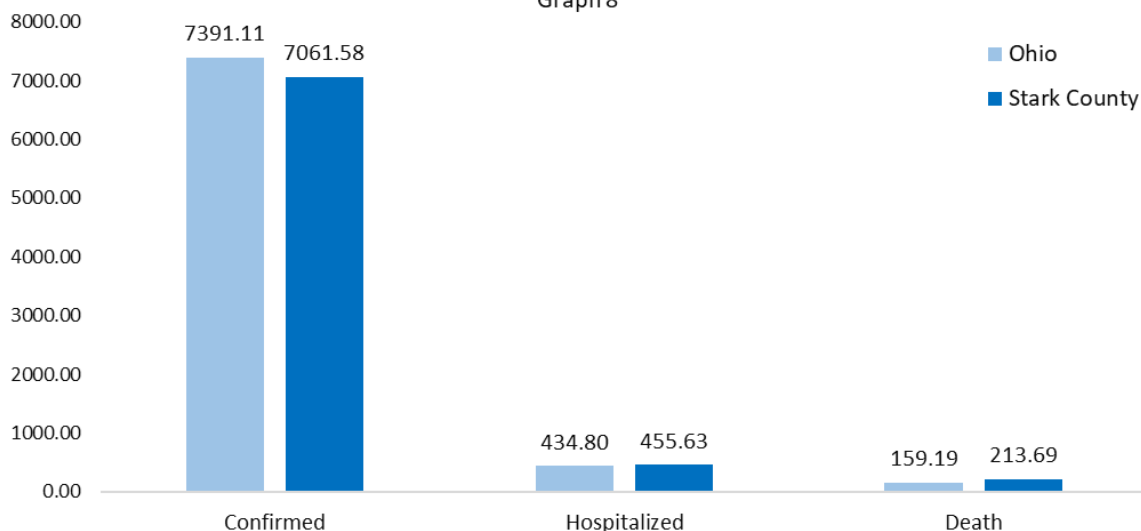


Health Jurisdiction	Probable Cases	Confirmed Cases	Total
Alliance	195	1426	1621
Canton	747	4214	4961
Massillon	326	2455	2781
Stark County	3229	18,144	21,373

Rates=(case count/population)\*100000

Graph 7 shows the rate of cumulative confirmed and probable cases by Stark County jurisdictions. Alliance, Canton and Massillon jurisdictions covers those within those particular city limits. Stark County jurisdiction covers all other areas outside of those three city limits. Rates calculated by 2018 population census data.

Rates of Confirmed Cases by Population  
Graph 8



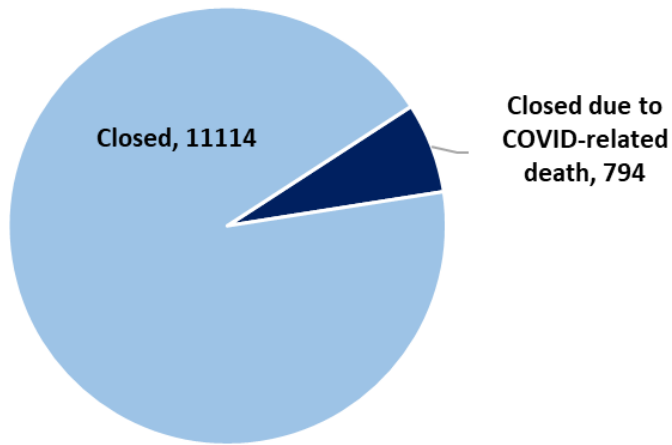
Counts of Cases	Ohio	Stark County
Confirmed	863,980	26,239
Hospitalized	50,826	1,693
Deaths	18,609	794

Rates based on 2018 population from data.census.gov.  
Rates=(count/population)\*100000

Graph 8 shows the rates dependent on the 2018 population in Ohio and Stark County. This graph works to compare cases in different populations by normalizing the cases per 100,000 persons.

- Ohio’s rate of laboratory confirmed cases is 1.0x higher than those in Stark County.
- Stark County’s rate of laboratory confirmed cases who require hospitalization is 1.0x higher than Ohio’s rate.
- Stark County’s rate of death due to COVID-19 complications is 1.3x higher than Ohio’s rate.

Closed Confirmed Cases  
Graph 9



Graph 9 is the count of confirmed cases closed or closed due to death. Stark County has a total of 11,908 cases closed of which 794 are due to death.

Cases can be closed for the following reasons:

- The person passed away. Can be either COVID-related or not COVID-related.
- Symptoms have resolved in that case.
- The person is no longer being followed by the local health department.

We have removed the graph associated with health care workers and long-term care facilities. For more information on long-term care facilities including breakdown by facility and by resident/staff, please visit:

<https://coronavirus.ohio.gov/wps/portal/gov/covid-19/dashboards/long-term-care-facilities/cases>

<https://coronavirus.ohio.gov/wps/portal/gov/covid-19/dashboards/long-term-care-facilities/mortality>

Background from [www.cdc.gov](http://www.cdc.gov): Coronavirus disease 2019 (COVID-19) is a respiratory illness that can spread from person to person. The virus that causes COVID-19 is a novel coronavirus that was first identified during an investigation into an outbreak in Wuhan, China.

Confirmed

- Meets confirmatory laboratory evidence. NOTE: Asymptomatic infections are reportable as confirmed cases.

Probable

- Meets presumptive laboratory evidence AND was reported on or after November 1, 2020; OR
  - o For reports received prior to November 1, 2020: meets presumptive laboratory evidence AND either clinical criteria OR epidemiologic linkage; OR
- Meets clinical criteria AND epidemiologic linkage with no confirmatory laboratory testing performed for SARS-CoV-2; OR
- Meets vital records criteria with no confirmatory laboratory evidence for SARS-CoV-2.

Counts and rates are based on date of illness onset. If onset date is unknown, the earliest known date is utilized. Any rates based on counts less than 10 are considered unreliable and caution should be exercised when interpreting. Due to testing restrictions, data may be skewed. Report compiled by Canton City Public Health.

Data is sourced from: [coronavirus.ohio.gov](http://coronavirus.ohio.gov), ODH data warehouse, and [census.gov](http://census.gov). “These data were provided by the Ohio Department of Health. The Department specifically disclaims responsibility for any analyses, interpretations or conclusions.”

Beginning March 2, 2021, ODH changed from using Ohio Disease Reporting System (ODRS) for mortality data to utilizing Electronic Death Registration System (EDRS) data. This allows only deaths which have been verified by the CDC’s National Center for Health Statistics (NCHS) to be included on the ODH website. This data is not updated daily. For the time being, Stark County will continue to utilize mortality data for ODRS with the disclaimer that data is considered preliminary and subject to change.

For information regarding test priorities, please visit: <https://coronavirus.ohio.gov/static/docs/COVID-19-Testing-Guidance.pdf>

For information regarding testing sites, please visit: <https://coronavirus.ohio.gov/wps/portal/gov/covid-19/testing-ch-centers/>

For information on Restart Stark, including guidance and resources for Stark County, please visit: <https://coronavirus-response-stark-county-resources-starkcountyohio.hub.arcgis.com/>

For information on the Ohio Public Health Advisory System, please visit: <https://coronavirus.ohio.gov/wps/portal/gov/covid-19/public-health-advisory-system/>

For information on testing Statewide, please visit: <https://coronavirus.ohio.gov/wps/portal/gov/covid-19/dashboards/key-metrics/testing>

For information on vaccinations, please visit: <https://coronavirus.ohio.gov/wps/portal/gov/covid-19/covid-19-vaccination-program>